

The logo for NID Net is centered on the page. It features the word "NID" in a large, bold, red, sans-serif font. Below it, the word "Net" is written in a smaller, red, sans-serif font. The text is set against a background of concentric circles and a grid pattern, with a color gradient from purple to green.

Shivendra Singh
DDE

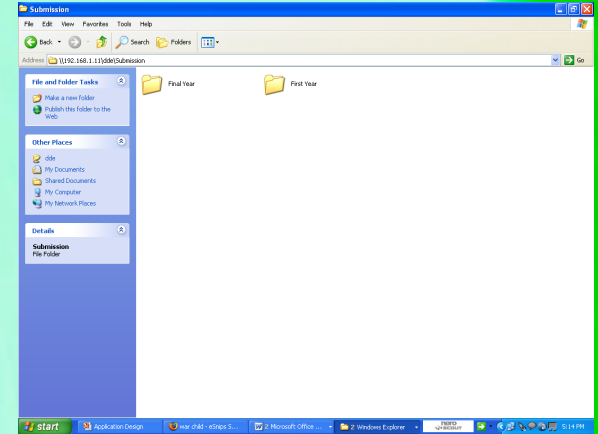
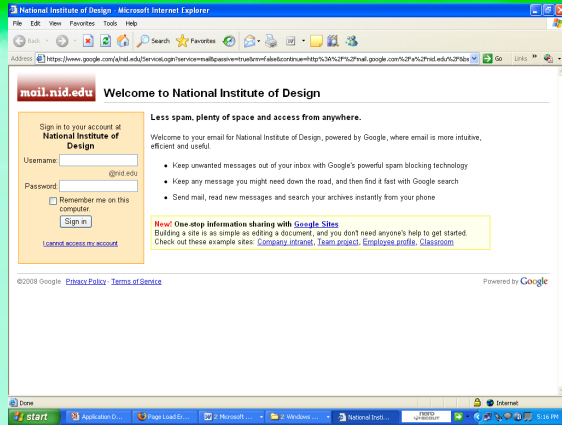
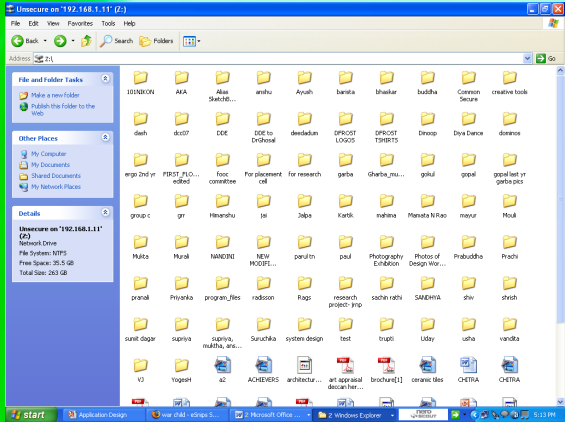
NID, R & D Campus, Bangalore

Why

- The Application is required because many user don't know where is the Unsecure & Submission folder on the network.
- The user have to sign in every time they want to access the Unsecure or Submission folder

What it do

- The Application will access the Unsecure & Submission folder over the Network.
- The User have to sign in once to access the Unsecure & Submission folder.
- The user can also access the NID Mail from the application.



NID Mail

Unsecure

Submission

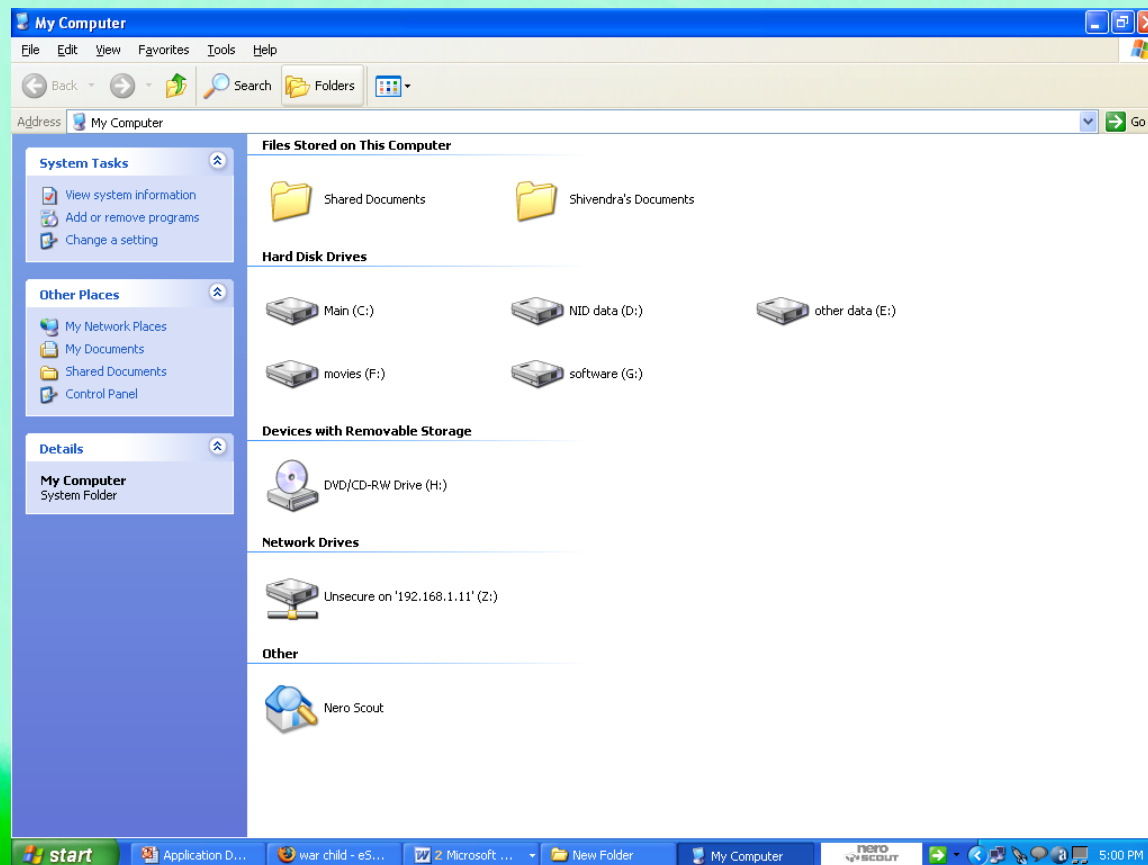
NID
Net

User Research

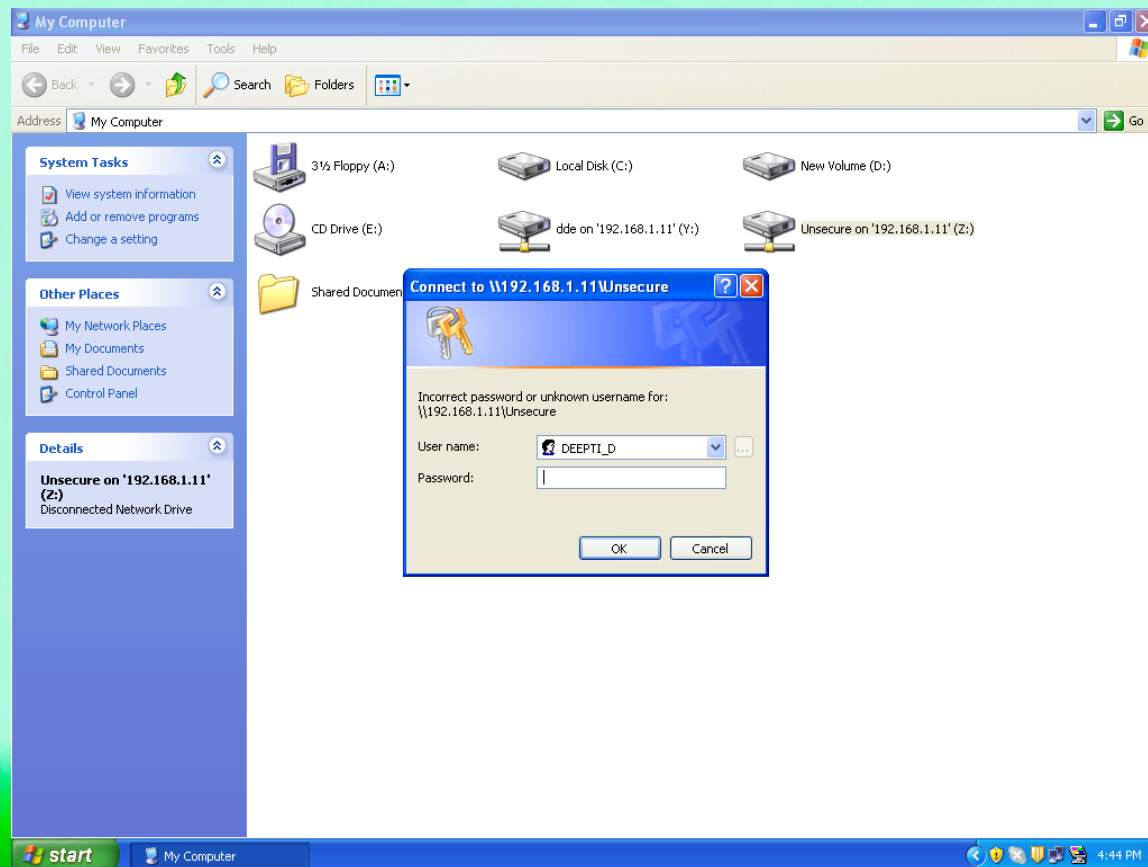
How the user access the Unsecure & Submission Folder from their Computer

Scenario 1 (Access using Shortcut)

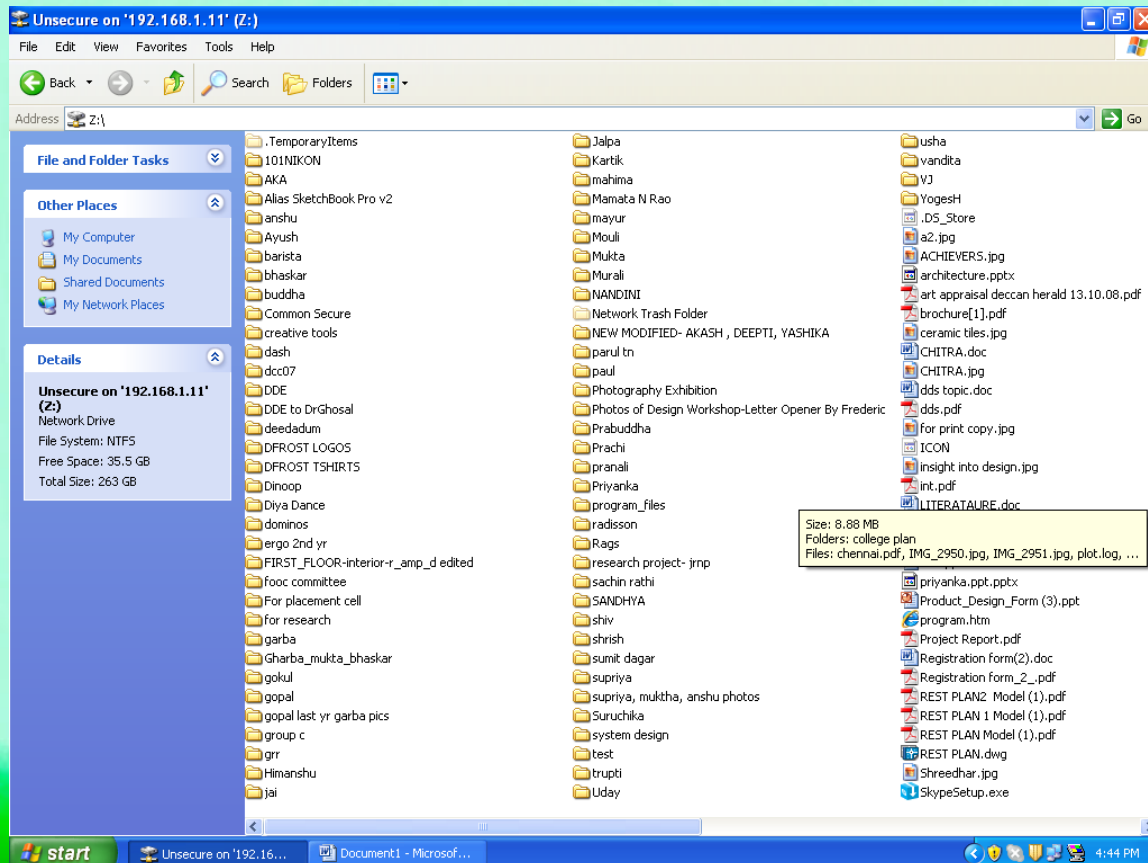
User searches for the shortcut of Unsecure & Submission folders on their system.



Then enter their ID & Password to access

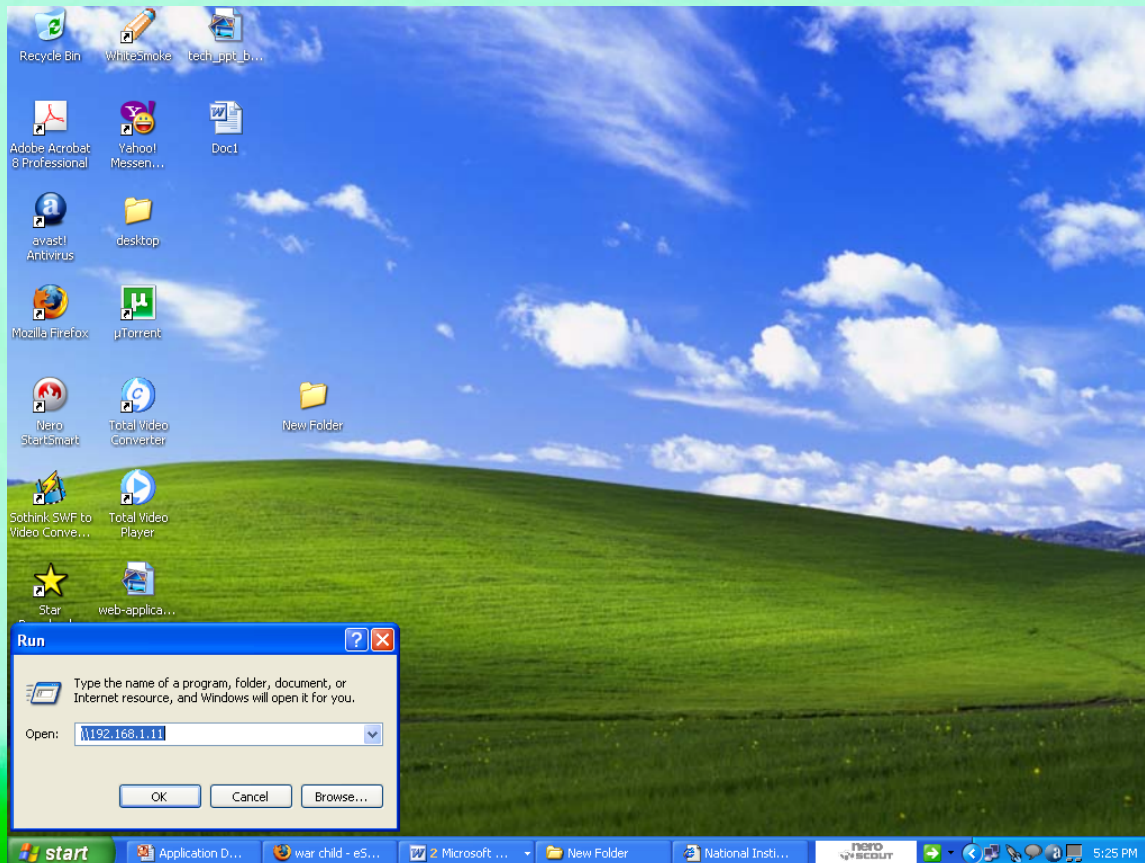


Got the Access

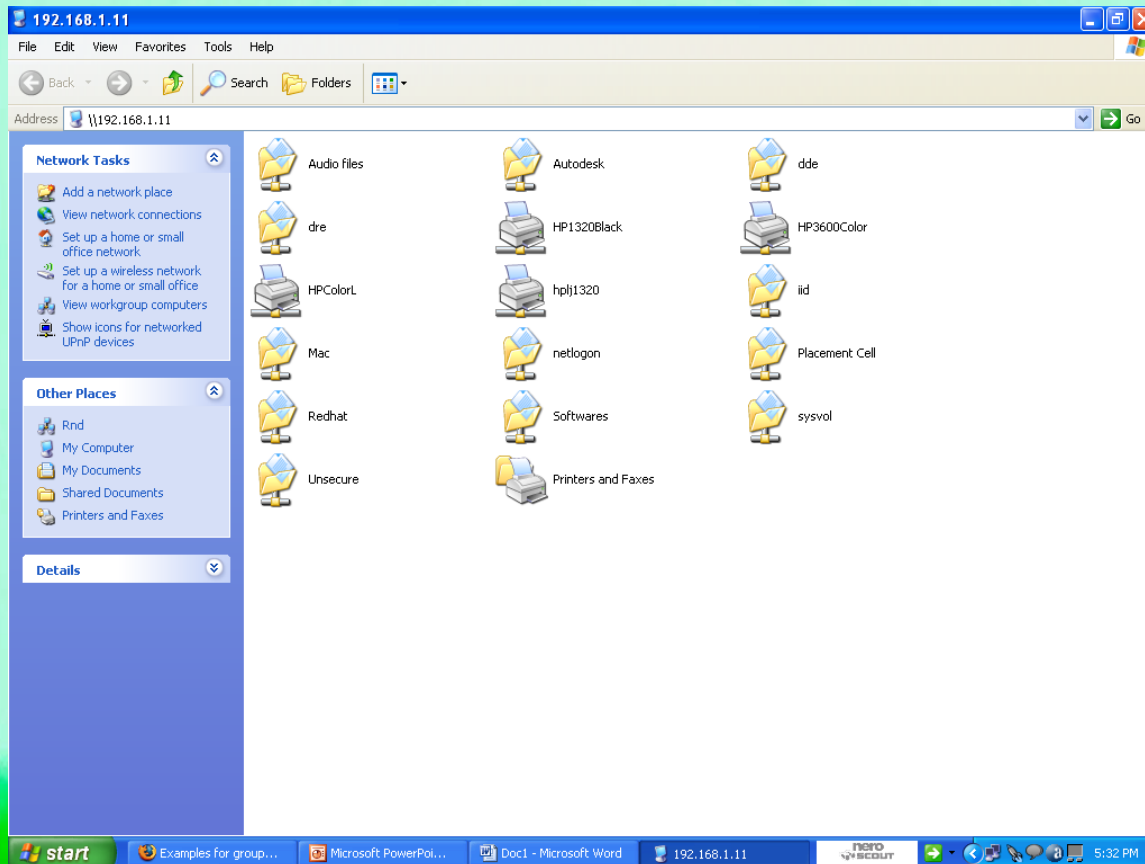


Scenario 2 (Access using entering IP Address)

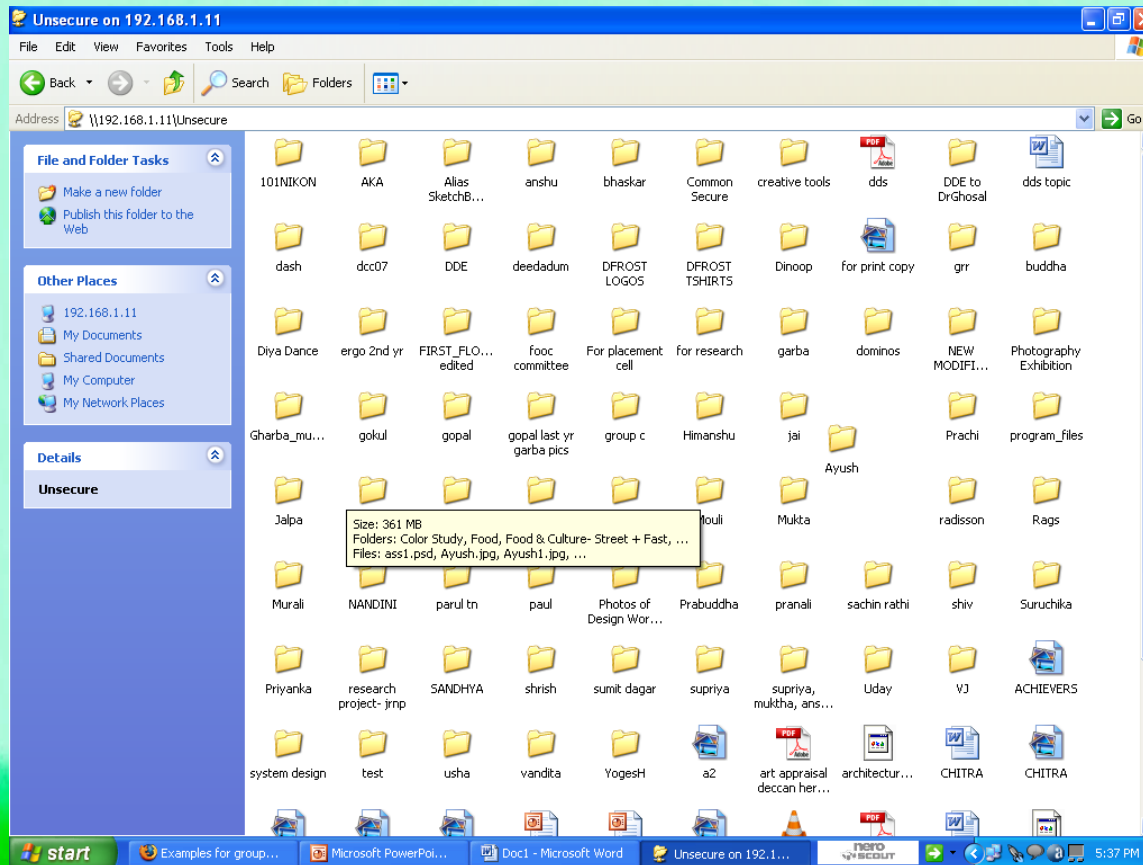
User enters the IP Address of Unsecure & Submission Folder to get the Access



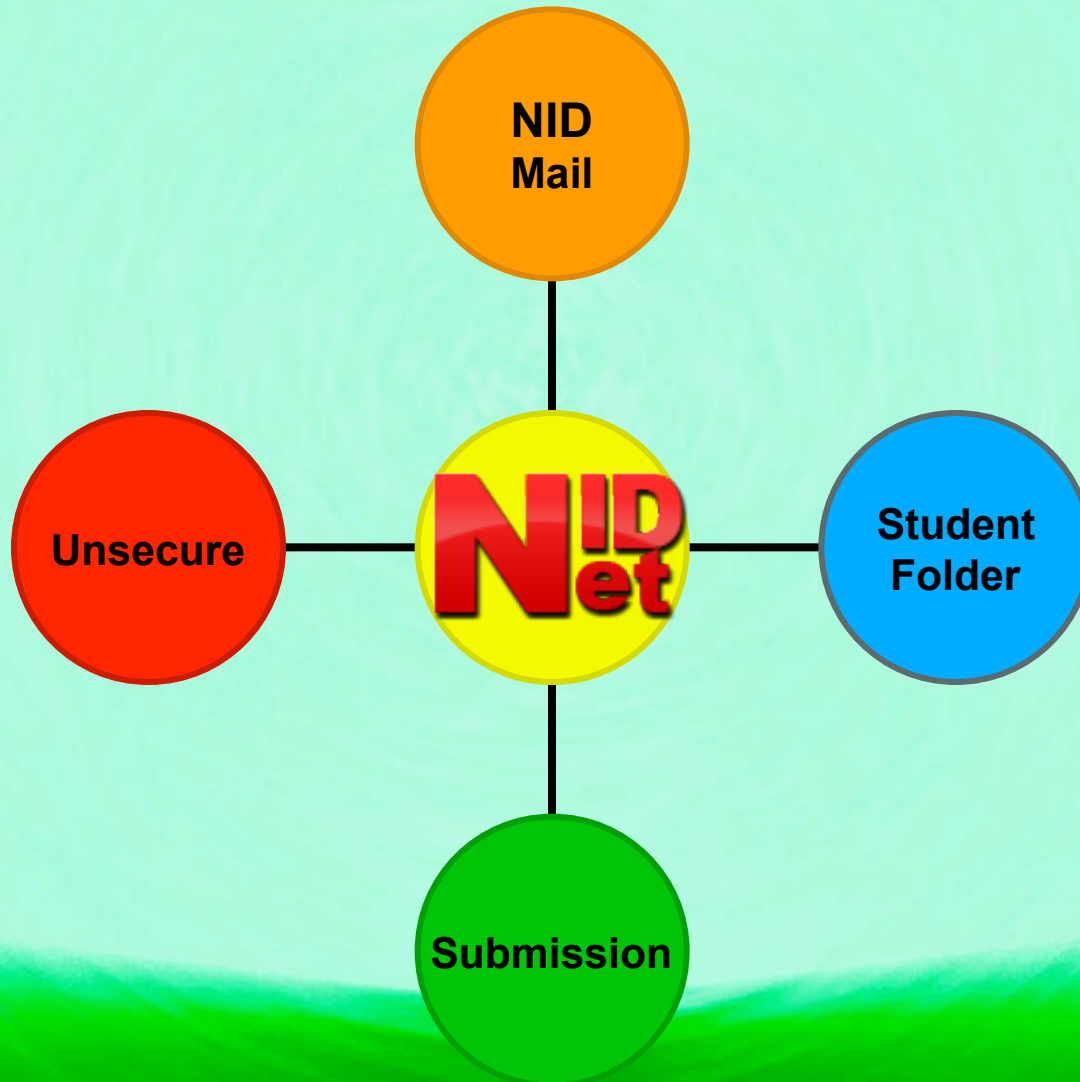
Goes to the network folder and select Unsecure and enters id & Password to get access



Got the Access



Interface Design



Interface Design

Unsecure

Submission

NID Mail

Student's Folder

Thank you